
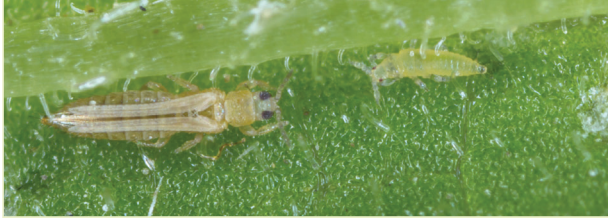









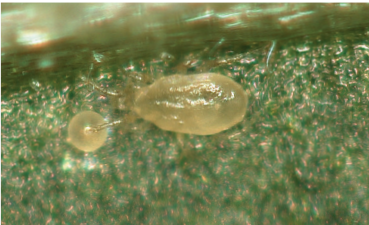

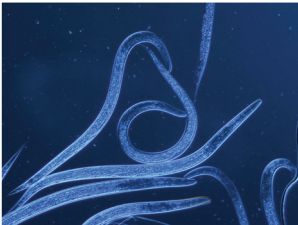
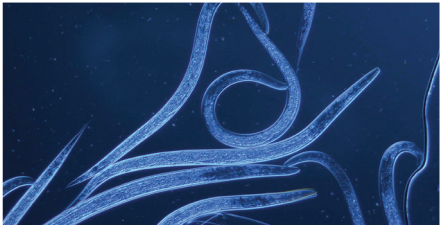






# BIOLOGICAL CONTROL OF CANNABIS PESTS

BioBee Sde Eliyahu Ltd. mass produces, implements and encourages the use of beneficial insects & mites for agricultural purposes. The BioBee team is working diligently to provide growers with the best, most advanced and proven solutions in the field of biological control.

	RED SPIDER MITE	THRIPS	FUNGUS GNATS	
PEST	Initial damage will appear as small yellow or white spots, severe stunting of the plants & webbing is a common sight.	Suck on the leaves, leaving silvery, irregular patterns on the leaves which can lead to leaf fall.	Direct damage: larval stages feed on roots Indirect damage: larval stages transfer fungal diseases (Fusarium & Botrytis).	
				
	<i>Tetranychus urticae</i>	<i>Frankliniella occidentalis</i>	<i>Bradicia paupera</i>	<i>Lycoriella ingenua</i>
DAMAGE				
		 <small>Photo by Jack Dykinga</small>		 <small>Photo by David R. Gillespie</small>
	<b>BioPersimilis</b> <i>Phytoseiulus persimilis</i>	<b>BioOrius</b> <i>Orius insidiosus</i>	<b>BioSwirski</b> <i>Amblyseius swirskii</i>	<b>BioAtheta</b> <i>Dalotia coriaria</i>
NATURAL ENEMIES				
	<b>BioCalifornicus</b> <i>Neoseiulus californicus</i>	<b>BioCucumeris</b> <i>Neoseiulus cucumeris</i>	<b>BioSF</b> <i>Steinernema feltiae</i>	<b>BioSF</b> <i>Steinernema feltiae</i>
			 <small>Photo by David R. Gillespie</small>	
	<b>BioAndersoni</b> <i>Neoseiulus californicus</i>	<b>BioStratiolaelaps</b> <i>Stratiolaelaps scimitus</i>	<b>BioAtheta</b> <i>Dalotia coriaria</i>	<b>BioStratiolaelaps</b> <i>Stratiolaelaps scimitus</i>

## DEFEAT PEST THE NATURAL WAY



BIOBEE Biological Solutions, Canada Inc. | [www.biobee.com](http://www.biobee.com)  
 Leamington Area | Maria Harms | +1(519) 816-4678 | [mariah@biobee-canada.com](mailto:mariah@biobee-canada.com)  
 Niagara Region | Kelly Smith | +1(289) 442-5713 | [kellys@biobee-canada.com](mailto:kellys@biobee-canada.com)

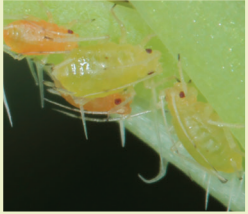


# THESE PRODUCTS ARE USED GLOBALLY WITH REMARKABLE SUCCESS

BioBee's production sites enables the supply of natural enemies year round, to both hemispheres.

## APHIDS

Cause leaf curl, produce honeydew leading to a fungal growth of sooty mould which effects photosynthesis and can stunt plant growth.



*Myzus persicae*



*Aphis gossypii*

## WHITE FLY

Most life stages cause direct feeding damage by extracting vital phloem sap from plants, whiteflies also excrete honeydew.



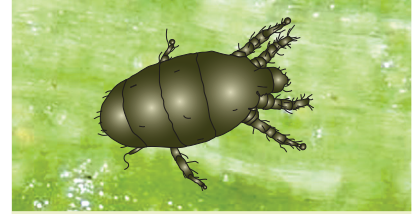
*Bemisia tabaci*



*Trialeurodes vaporariorum*

## BROAD MITE

Damage to the growing tips resembles hormone damage: narrow, shiny yellowish leaves curling downward from the midrib.



*Polyphagotarsonemus latus*

PEST

DAMAGE



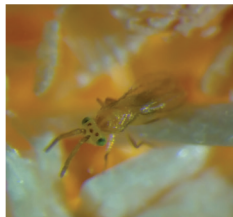
NATURAL ENEMIES



**BioAphidius**  
*Aphidius colemani*



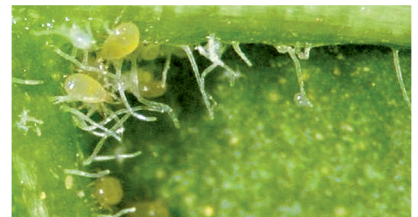
**BioErvi**  
*Aphidius ervi*



**BioEretmocerus**  
*Eretmocerus eremicus*



**BioSwirski**  
*Amblyseius swirskii*



**BioSwirski**  
*Amblyseius swirskii*



**BioLacewing**  
*Chrysoperla carnea*



**BioAphidoletes**  
*Aphidoletes aphidimyza*



**BioEncarsia**  
*Encarsia formosa*



**BioDelphastus**  
*Delphastus catalinae*

# WE HAVE SOLUTIONS

## GENERALISTS PREDATOR FEED



**BioArtFeed**

Premium quality *Artemia* cysts provided in bulk or 200 gr. dispenser.



**BioArtLine**

Premium quality *Artemia* cysts on a novel feed delivery system which enables the pre-establishment of a community of predator species.

Feed to support and build up the BCA population in your crops.

## Great Feed makes Great Beneficials !

PREMIUM QUALITY FEED SUITABLE FOR

PREDATORY MITES (Phytoseiidae)	ORIUS BUGS (Anthoridae)	MIRID BUGS (Miridae)
<i>Amblyseius swirskii</i> <i>Amblyseius montdorensis</i> <i>Amblydromalus limonicus</i> <i>Neoseiulus cucumeris</i>	<i>Orius laevigatus</i> <i>Orius insidiosus</i> <i>Orius majusculus</i> <i>Orius thripoborus</i> <i>Orius naivashae</i>	<i>Nesidiocoris tenuis</i>



**BIOBEE Biological Solutions, Canada Inc. | www.biobee.com**

Leamington Area | Maria Harms | +1(519) 816-4678 | mariah@biobee-canada.com  
Niagara Region | Kelly Smith | +1(289) 442-5713 | kellys@biobee-canada.com